



PURPOSE AND NEED & PUBLIC OUTREACH EFFORTS

September 2020

Study Purpose and Need Statement

The North Lake Shore Drive (NLSD) corridor is an iconic setting, extending for approximately seven miles from Grand Avenue to Hollywood Avenue. This area serves a variety of transportation activities including, but not limited to, walking, bicycling, transit, and driving. Much of the major infrastructure servicing those users, such as bridges and roadways, are nearly 80 years old and have exceeded their service life.

This study will meet state and federal requirement processes meant to integrate environmental values and public involvement into transportation improvements. These requirements include the National Environmental Policy Act (NEPA), the Fixing America's Surface Transportation Act (FAST), the National Historic Preservation Act, Section 404 of the Clean Water Act, Section 4(f) of the US Department of Transportation Act of 1966 and Context Sensitive Solutions (CSS), among others.

The NEPA process consists of several steps including defining existing conditions, developing a Purpose and Need Statement, identifying and evaluating alternatives, selecting a preferred alternative and finally, obtaining environmental and design approvals.

To define the issues that exist throughout the corridor, the project team collected extensive data and met with the

The North Lake Shore Drive project team has reached a critical milestone in the study process as we plan to recommend a narrowed range of alternatives to be carried to the next stage of analysis later this year! In preparation for this next step and to provide a refresher on some improvements common to all alternatives, the project team has prepared a few Study Spotlights, each focusing on a specific topic important to understanding the Study.

REDEFINE THE DRIVE



N O R T H
L A K E S H O R E
D R I V E

project Task Force and community members at the outset of the study to develop and agree upon the study's Purpose and Need Statement (2014). This agreed upon statement defines the study's goals and is the basis upon which alternatives are developed and how each alternative has been measured to date.



The Purpose and Need for the NLSD project is to:

- Improve safety for all users
- Improve mobility for all users
- Address infrastructure deficiencies
- Improve access and circulation throughout the corridor

The Study team continues to reference the Purpose and Need Statement along with public and stakeholder input, to develop and evaluate the proposed design improvements.

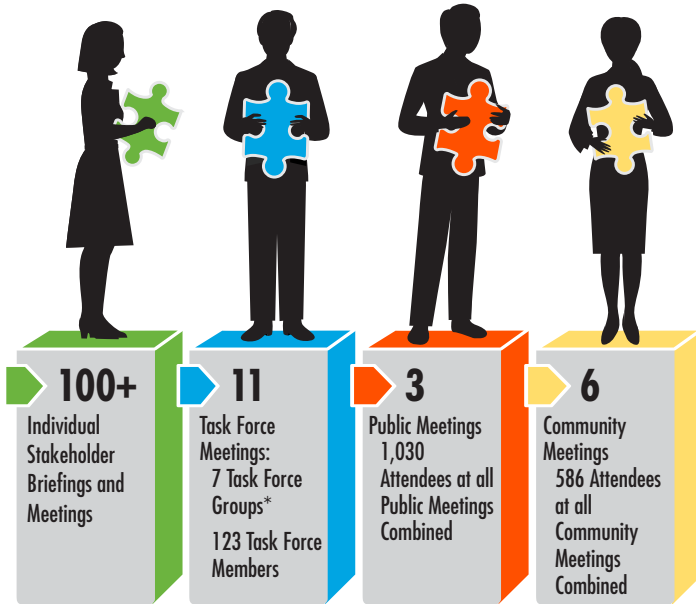
To view the full Purpose and Need Statement, please visit the project website:
https://northlakeshoredrive.org/info_tech_documents.html

Public Outreach Efforts

Participation from the public, the Task Force, and additional community stakeholders is crucial as the project team strives to satisfy a variety of interests and perspectives that is reflective of the affected communities and users in the corridor.

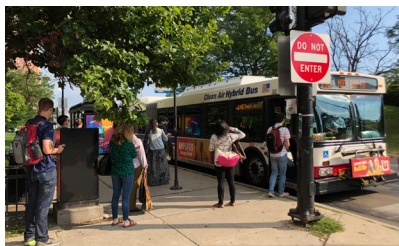
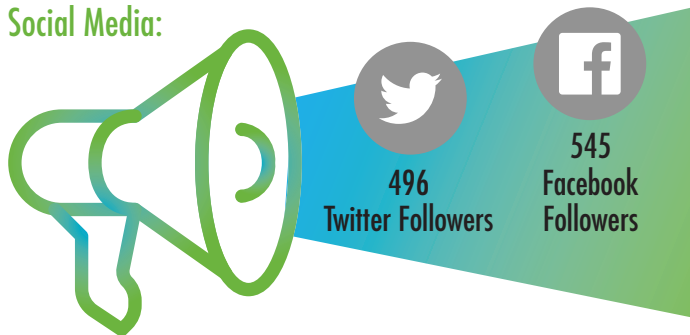
This page provides additional information about our public outreach efforts to date, including meetings, events, social media, and public comments.

Meetings:



*Corridor Planning Committee, Transportation, Park Users & Environment, Businesses & Institutions, Residential - South, Residential - Central, Residential - North

Social Media:



2019 Outreach Summary:

Throughout 2019, project team members went to public events and locations to engage community members about the project.



Library Outreach

In April 2019, members of the NLSD project team set-up tables at five Chicago Public Library branches near the NLSD project corridor. Project team members staffed tables at these locations in order to increase public awareness of the project, answer project-related questions and encourage members of the public to sign up for the project newsletter. At the conclusion of this outreach effort, the project team had spoken with an estimated 80 individuals, and dozens of community members signed up for the project e-newsletter.

Bike the Drive

We also attended the Fifth Third Bike the Drive event in May 2019. At this event, project team members informed community members about the NLSD project and encouraged attendees to sign up for the electronic newsletter distribution list. In total, we had over 100 attendees stop by the booth and we received approximately 50 new newsletter subscribers!



Comments Received:

Almost 2,000 Comment Submissions have been Received since the Study Began



Top comment **topics** over the life of the project:

1. NLSD Roadway Needs
2. Junction* Concerns
3. Pedestrians/Bicycles and the Lakefront Trail Improvements
4. Transit Improvements



Top comment **locations** over the life of the project:

1. Chicago Avenue
2. Belmont Avenue
3. Oak Street S-Curve

*A junction is a grade-separated intersection (one road passes over another) that allows crossing roadways to connect with NLSD without interrupting traffic on the Drive.

The project team is pleased to share these Study Spotlights with you. If you have any comments on the information in this handout, or any other project materials, please use the online comment form to provide input: northlakeshoredrive.org/contact.html

**We welcome feedback at any time during the project process.
We look forward to continuing to work with you to Redefine the Drive!**