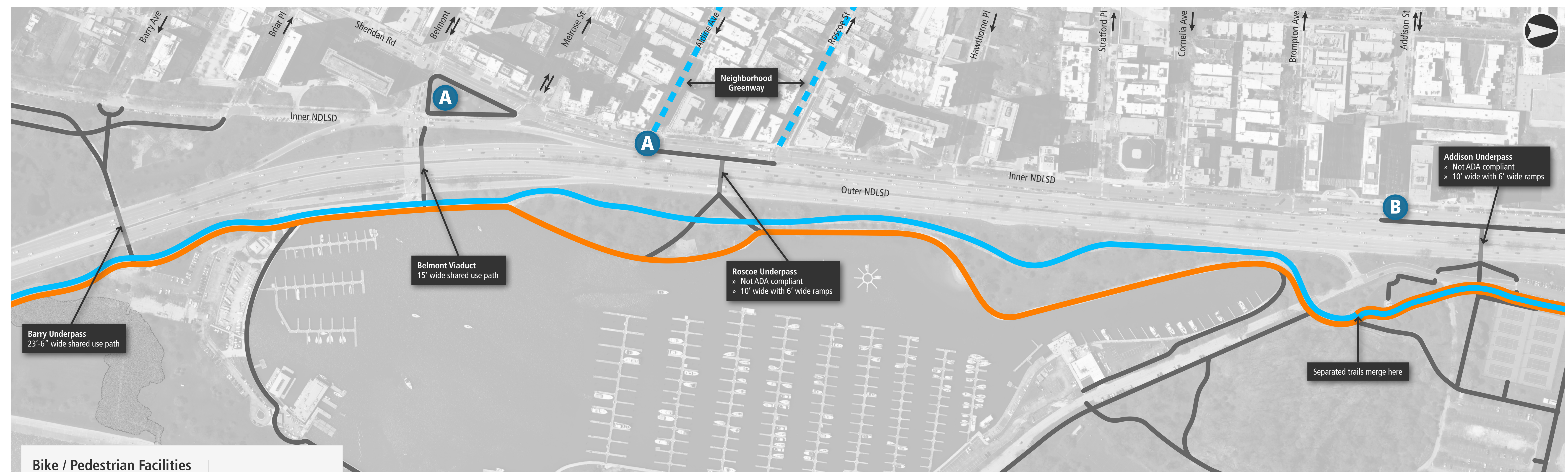
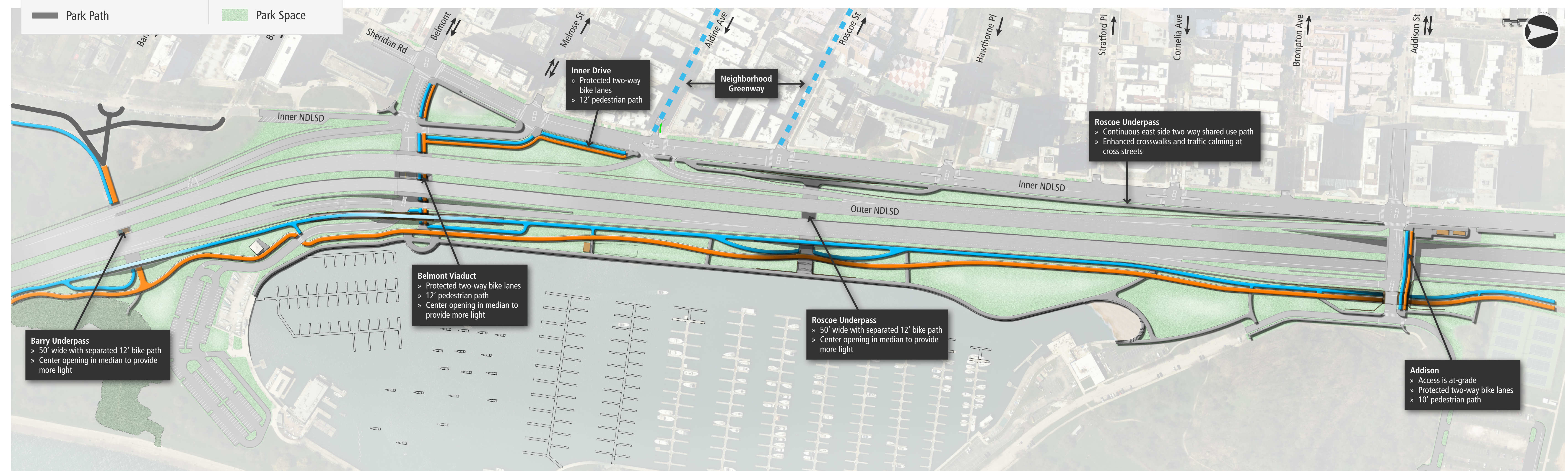


PEDESTRIAN / BICYCLE ACCESS & ACCOMMODATIONS

Existing Conditions



Potential Future Conditions



UNDERPASSES

Existing conditions at the Roscoe underpass



Potential future conditions



WHAT WE HEARD: BELMONT & ALDINE

A Designs in this area should prioritize pedestrian and bicyclist connectivity.

- "I've read that the city will be installing enhanced pedestrian traffic signals at some high-volume intersections. The Belmont intersections with Sheridan/LSD and the intersection to the east are good candidates for more visible, sound-enhanced walk/don't walk signals."
- "I'm concerned there hasn't been enough thought into how pedestrians and people who use public transportation will be affected in their daily lives and commute."

- "Concern for pedestrians and bicyclists who will be trying to cross the inner drive at Aldine to reach the park on the east side of the Drive."
- "Concern for pedestrians and bicyclists who will be trying to cross the inner drive at Aldine to reach the park on the east side of DLSL. Even with pedestrian walk signs, there will be cars exiting southbound DLSL at high speeds which will conflict with those trying to cross to get to the tunnel under DLSL. Aldine has been designated as the desired east bound street for bicyclists to reach the park and gets significant bicycle traffic as a result."

WHAT WE HEARD: ADDISON

B Improved bicycle, pedestrian and transit access to park is a priority.

- "Addison is a signed bike route, and many folks on bikes use Addison & Waveland to access the lakefront. Please improve these two intersections with Inner LSD to provide a safe, protected crossing to this new bike trail location."
- "Hello, Can you please tell me if a walk over where traffic would be below and people would walk across over a underpass at Addison is still the plan? I'm very much in favor of a walk over underpass at Addison."