



North Lake Shore Drive Phase I Study Northern Terminus Traffic Study

October 30, 2019

Community Meeting





Meeting Agenda

- Introductions
- NLSD Phase I Study & Coordination
- Northern Terminus Traffic Study (NTTS)
Overview and Meeting #1 Recap
- Alternatives Development and Evaluation
- Next Steps
- Finalist Alternatives Workshop

NLSD Phase I Study

- **Study area**
 - Grand Avenue to Hollywood Avenue
 - 11 neighborhoods, 6 wards
 - 24 bridges and tunnels
 - 12 cross-road junctions
- **Over 80 years old and in need of reconstruction**



www.northlakeshoredrive.org

Project Study Group (PSG)



- Ensure compliance with design & environmental policies.
- Promote partnership with stakeholders.
- Work to achieve general project understanding.
- Make final project recommendations.
- Ultimate decisions are made by IDOT.



Stakeholder Involvement

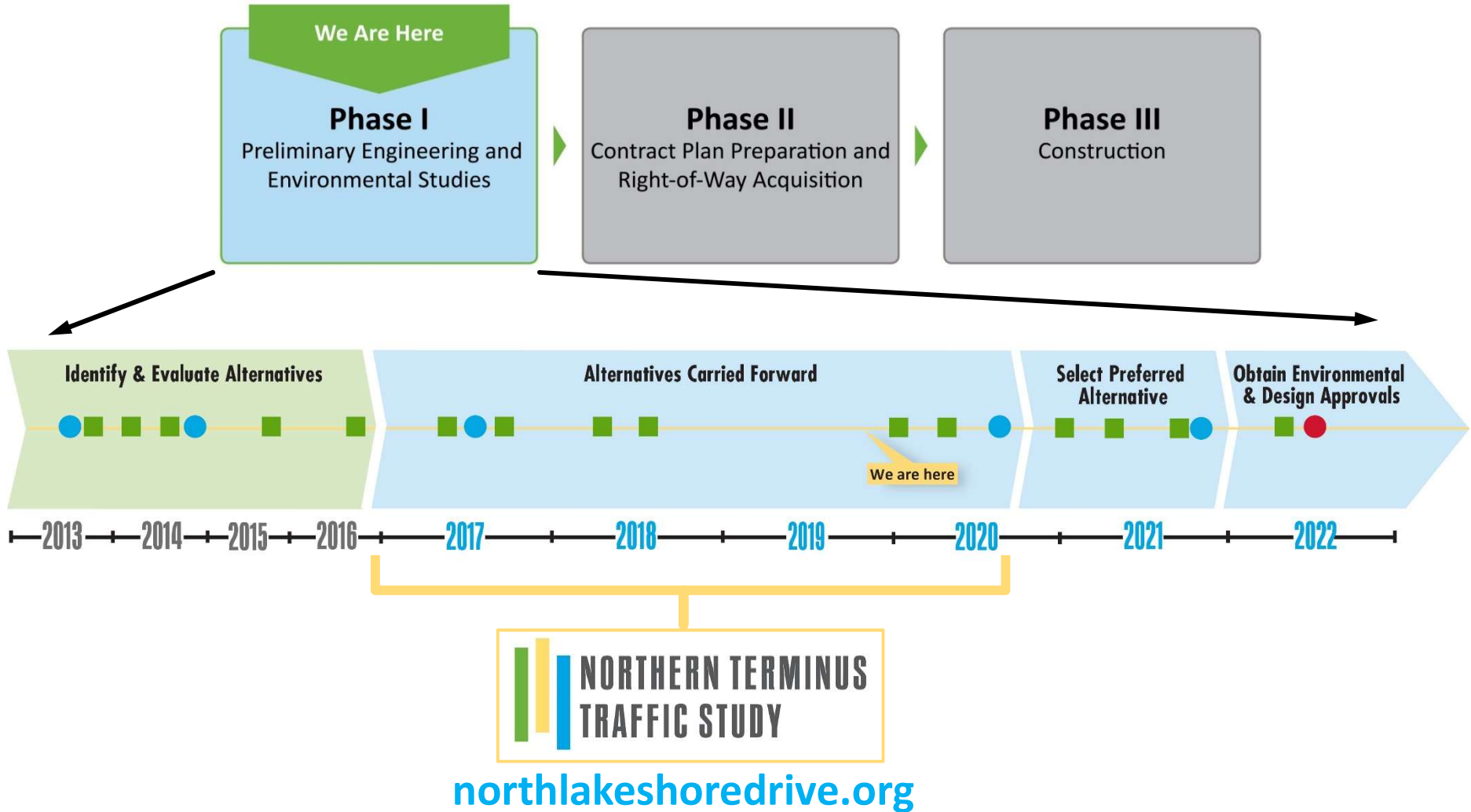
Corridor Planning Committee (CPC)

- Wards (2, 42, 43, 44, 46,48)
- Historic Stakeholders & Oversight Agencies
- Federal Partners & Oversight Agencies
- Civic & Regional Stakeholders

Task Forces

- Environmental
- Transportation
- Park User
- Business & Institution
- 3 Residential (South, Central & North)

Overall Study Progress to Date





Meeting Goals & Objectives

- Discuss existing conditions within the NTTS area and feedback received
- Provide update on study progress
- Review NTTS alternatives under consideration
- Receive feedback on NTTS alternatives

Feedback will be used to:

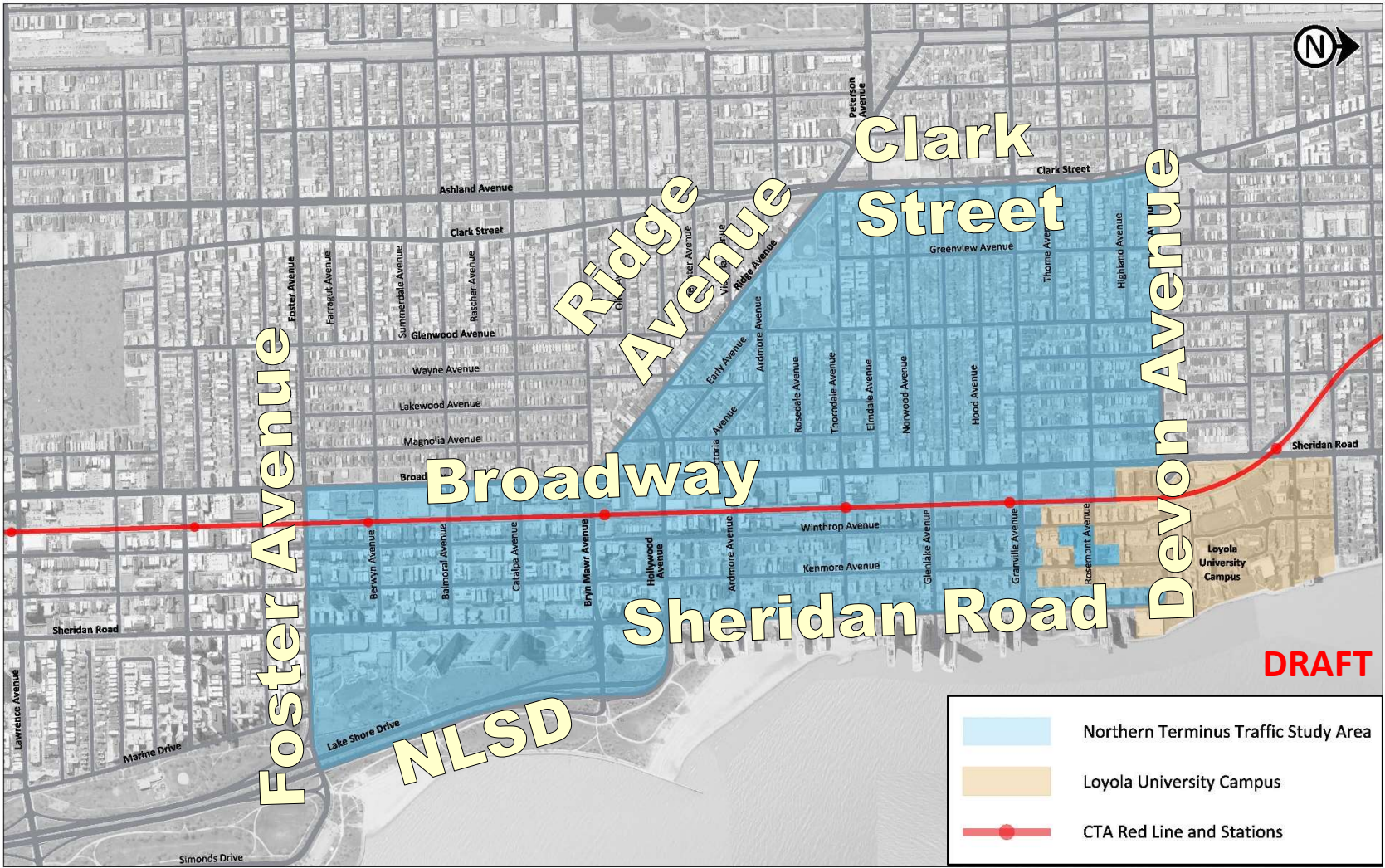
- Enhance the project team's understanding of the NTTS area
- Refine the alternatives under consideration



Northern Terminus Traffic Study Overview



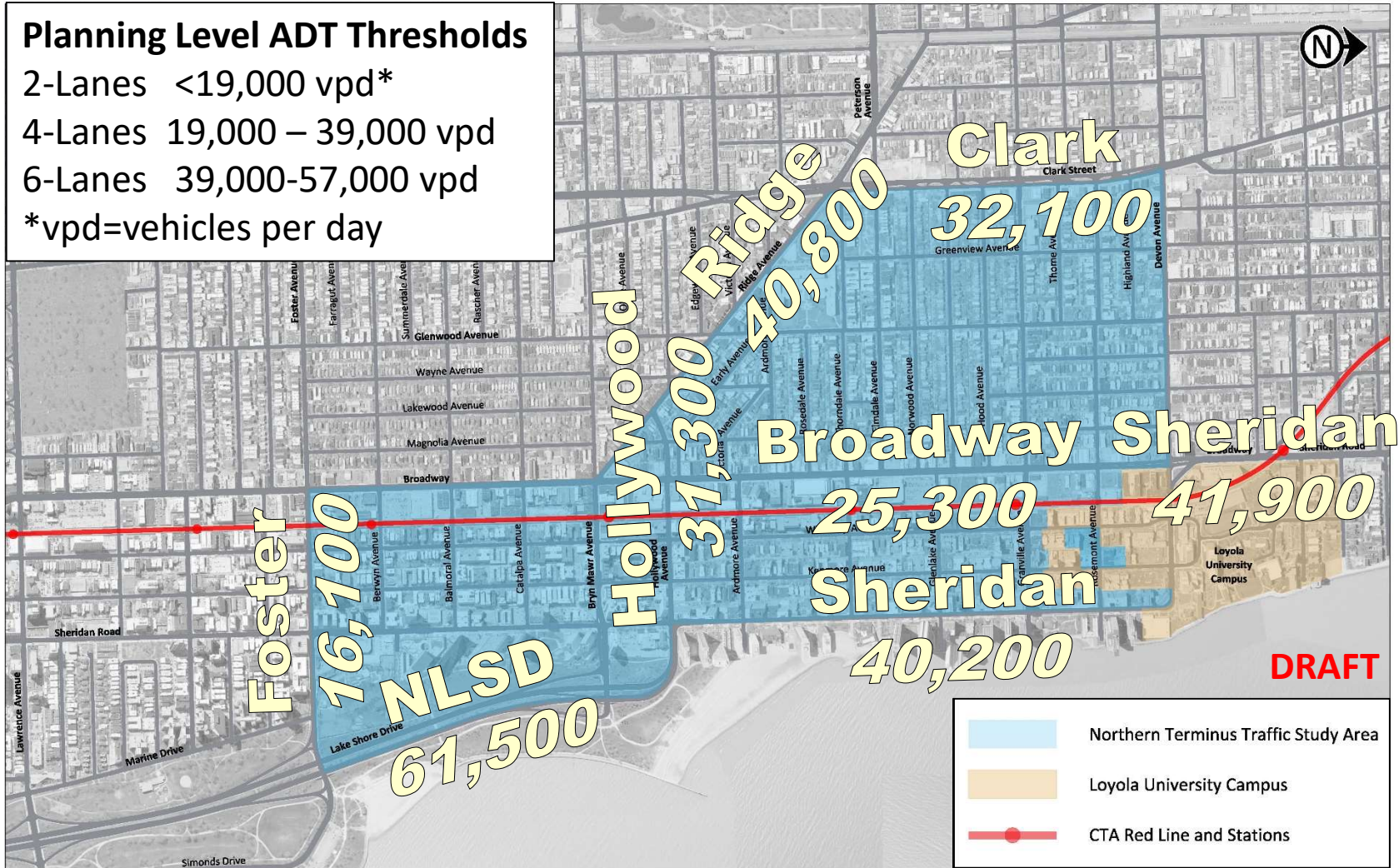
Northern Terminus Traffic Study (NTTS)



Northern Terminus Traffic Study (NTTS)

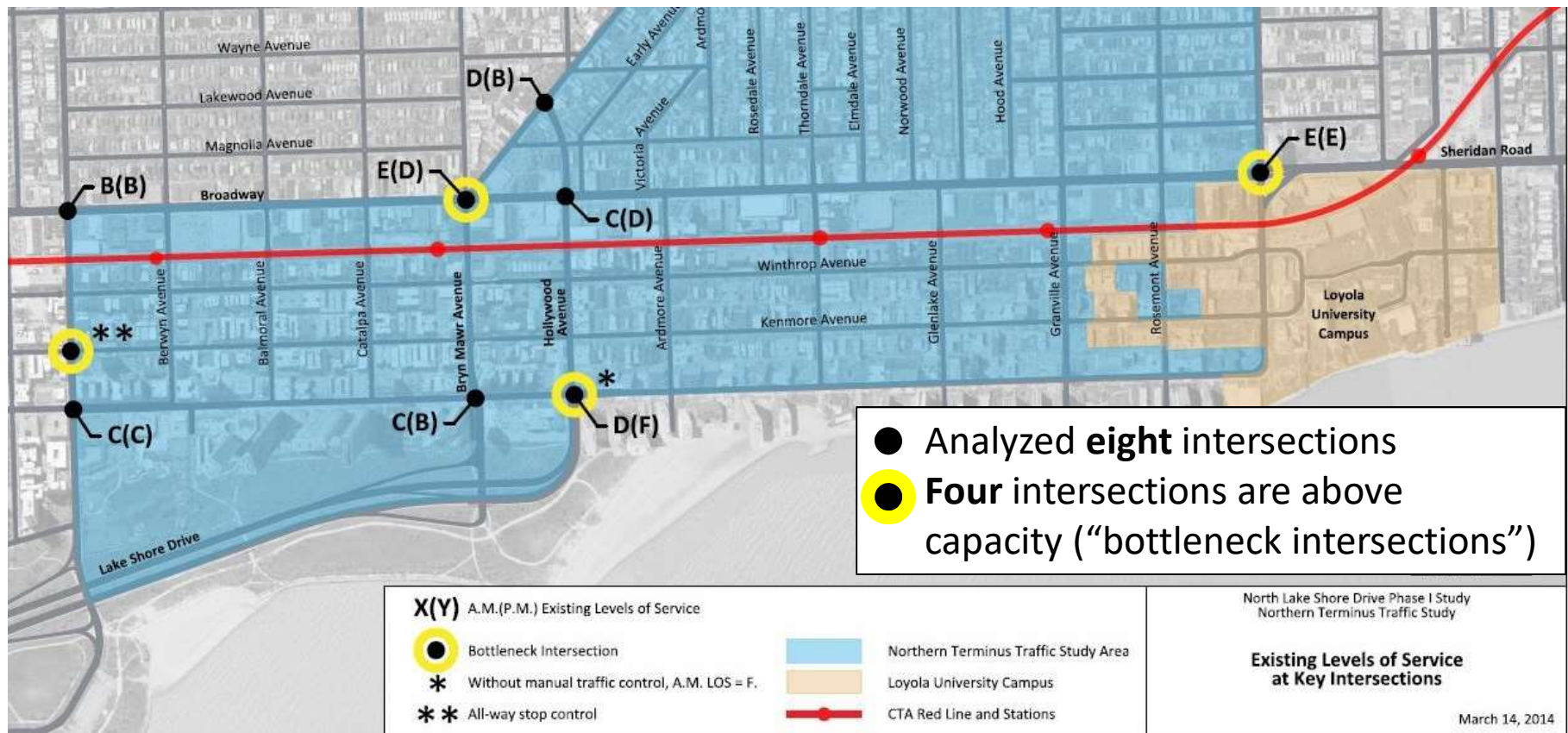
Planning Level ADT Thresholds

- 2-Lanes <19,000 vpd*
 - 4-Lanes 19,000 – 39,000 vpd
 - 6-Lanes 39,000-57,000 vpd
- *vpd=vehicles per day



Existing Traffic Conditions

Existing Levels of Service at Key Intersections



NTTS Context

- 74,000 vehicles per day pass through Hollywood/Sheridan/NLSD intersection
- Majority of regional traffic is destined to/from north on **Broadway/Sheridan Road** or to/from northwest on **Ridge Avenue**
- Regional travel demand causes safety, mobility & accessibility issues in neighborhood





NTTS Public Involvement

Stakeholder Meeting #1

April 2017, 22 Attendees

Community Meeting #1

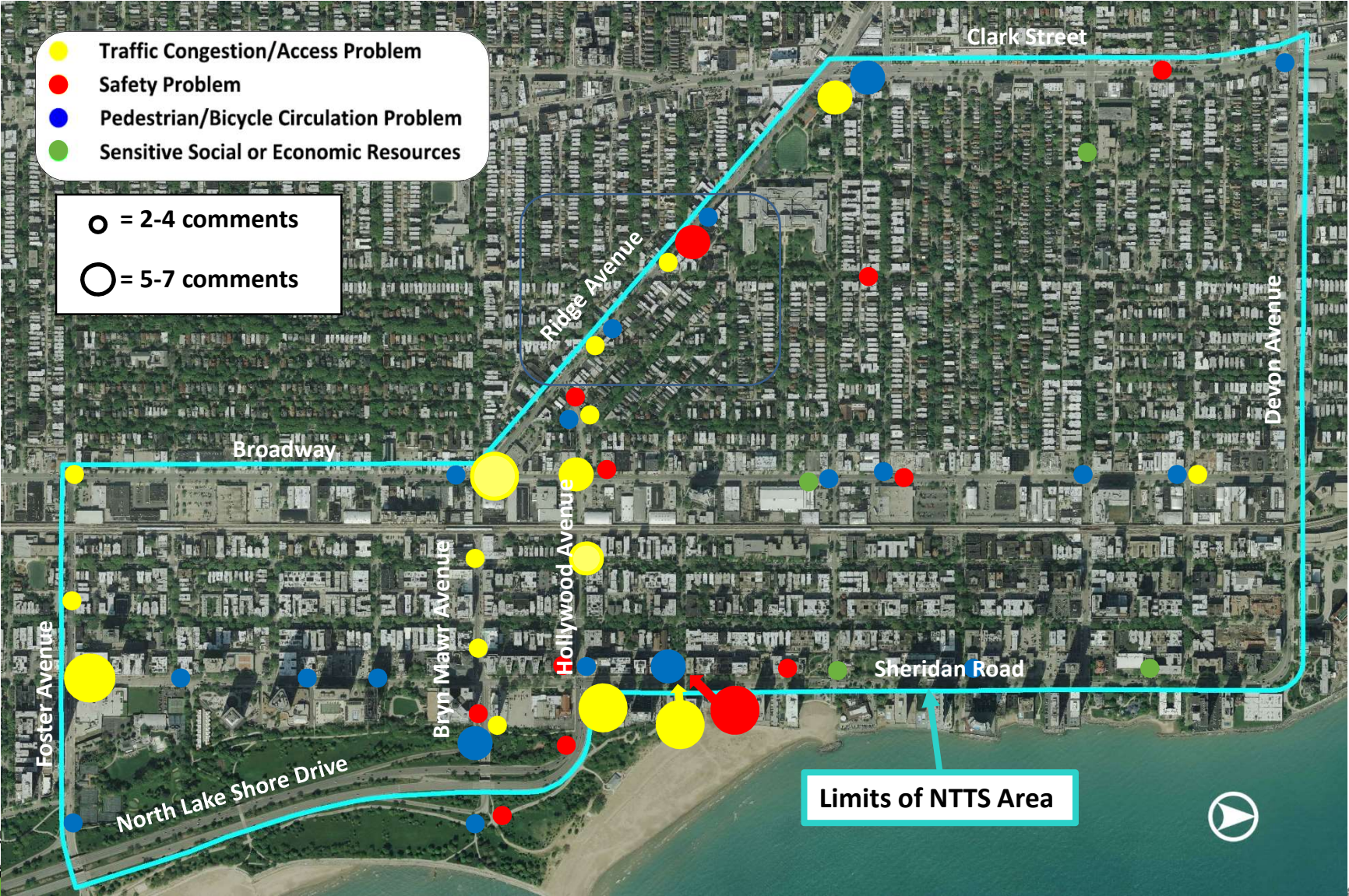
June 2017, 63 Attendees

Topics

- Presentation and Needs Assessment Workshop
 - NLSD Phase I Study
 - Previous Plans/Initiatives
 - Goals and Objectives
 - Needs and Issues Identification



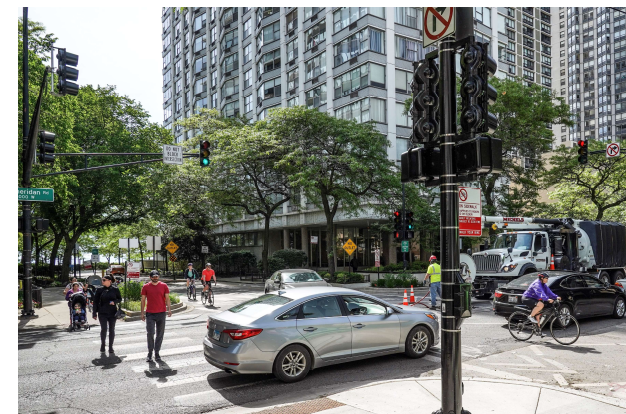
NTTS Needs Assessment Workshop



NTTS Goals and Objectives

Goals and objectives developed through project analysis and community feedback

- Improve **movement of vehicles** to/from NLSD while preserving **neighborhood quality of life**
- Improve **pedestrian and bicycle infrastructure** to enhance safety and mobility (Complete Streets)
- Reduce **potential conflicts** between different traffic modes and improve **safety** for all users



NTTS Goals and Objectives

Goals and objectives developed through project analysis and community feedback

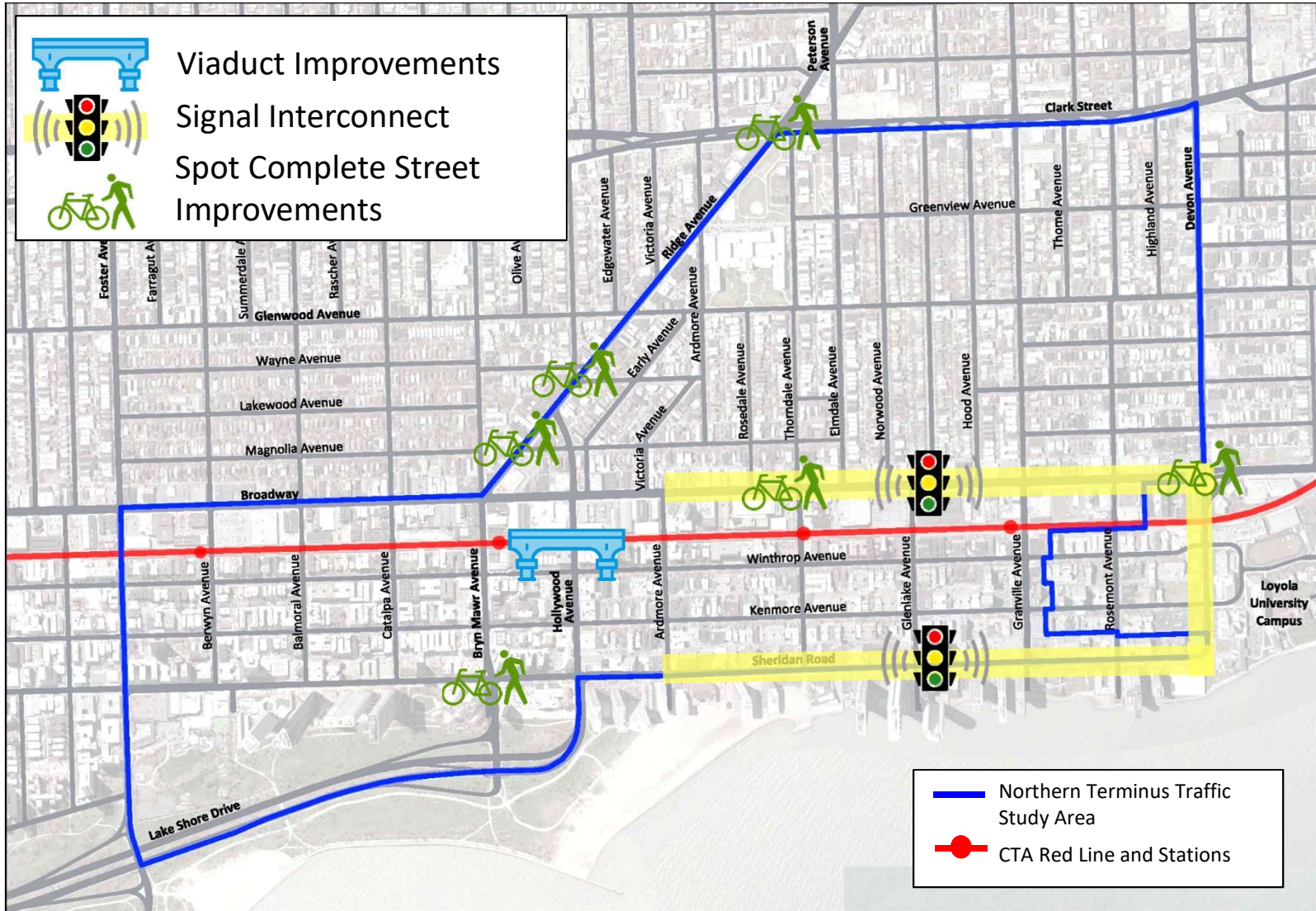
- Achieve **improved distribution of traffic** better tailored to roadway context (Sheridan and Broadway)
- Eliminate **manual traffic control** at intersection of Hollywood, Sheridan and NLSD





NTTS Alternatives Development and Evaluation

Ongoing Projects - Baseline for Alternatives





Alternatives Development

- The project team used **community feedback** and **technical analysis** to develop **four (4) alternatives** that best met project study goals
- Alternatives combine unique changes to:
 - Roadway configuration
 - Traffic distribution
 - Signalization
 - Pedestrian and bicycle infrastructure

Common Features



Complete Streets improvements on Broadway are compatible with **all** alternatives

Bryn Mawr Avenue (west of Broadway) – Improvements ranging from curb extension to a cul-de-sac

Broadway – Install center turn lanes

Sheridan Road –

- Install center turn lanes
- Include pull out space for bus and delivery truck operations

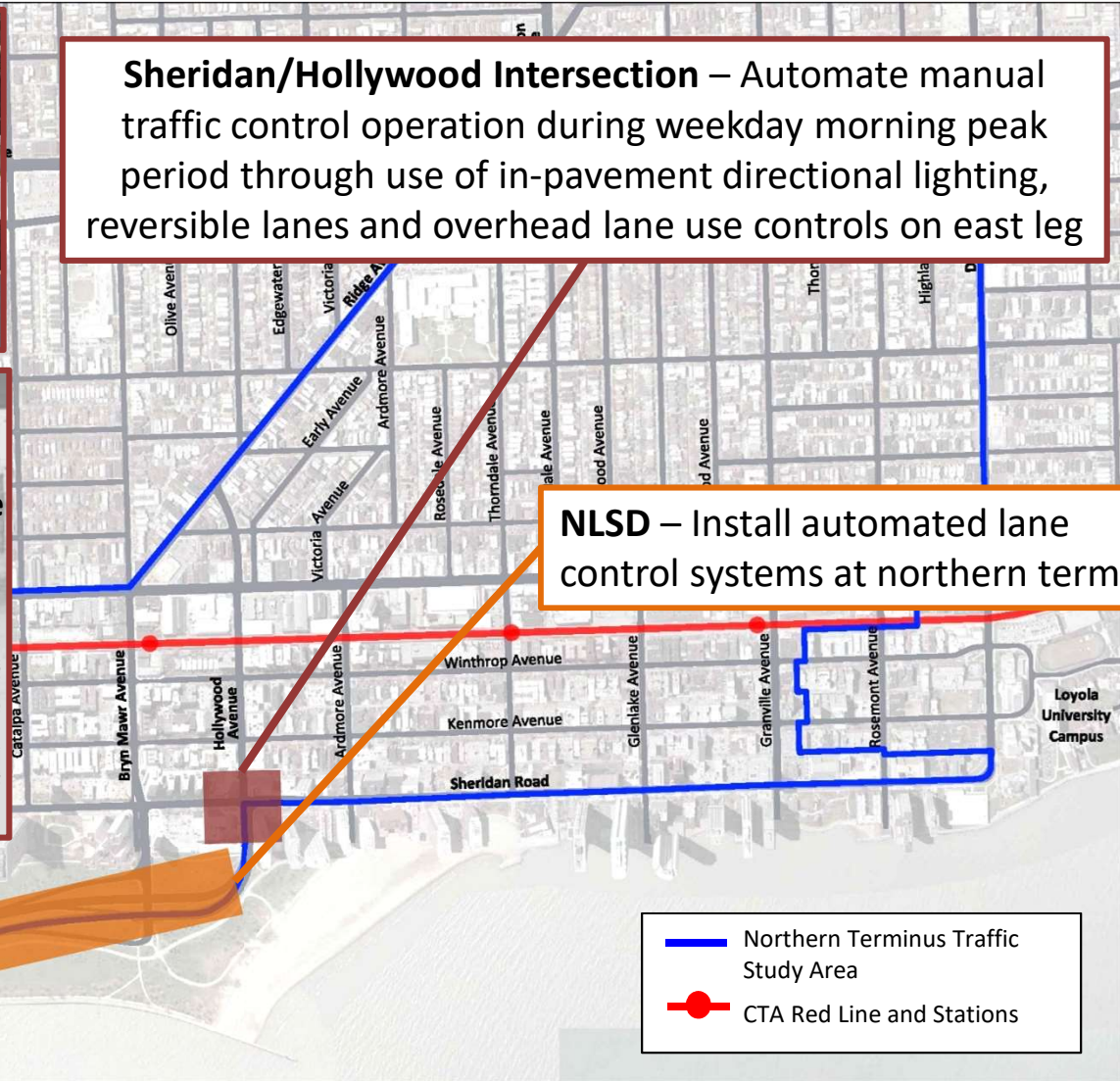
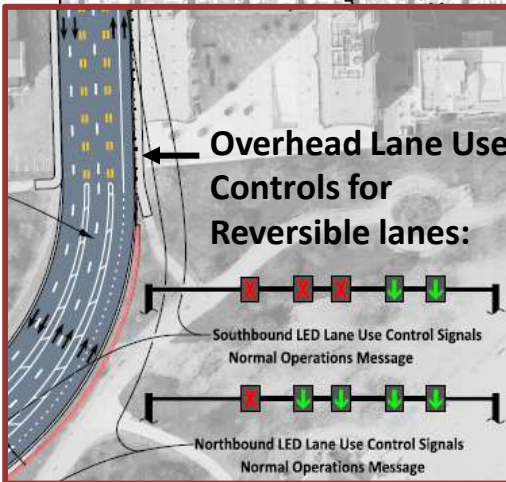
— Northern Terminus Traffic Study Area
● CTA Red Line and Stations



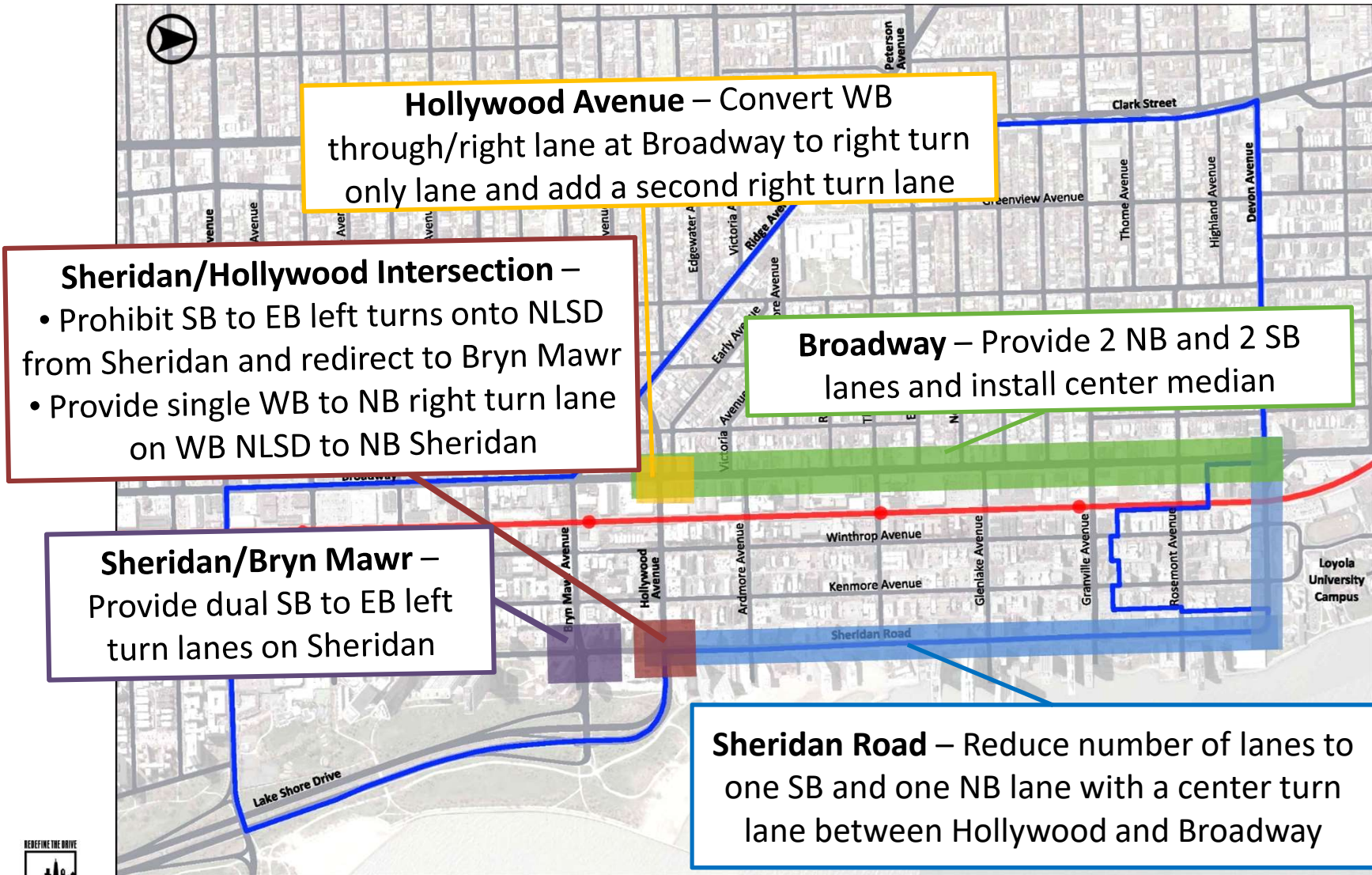
Alternative 1



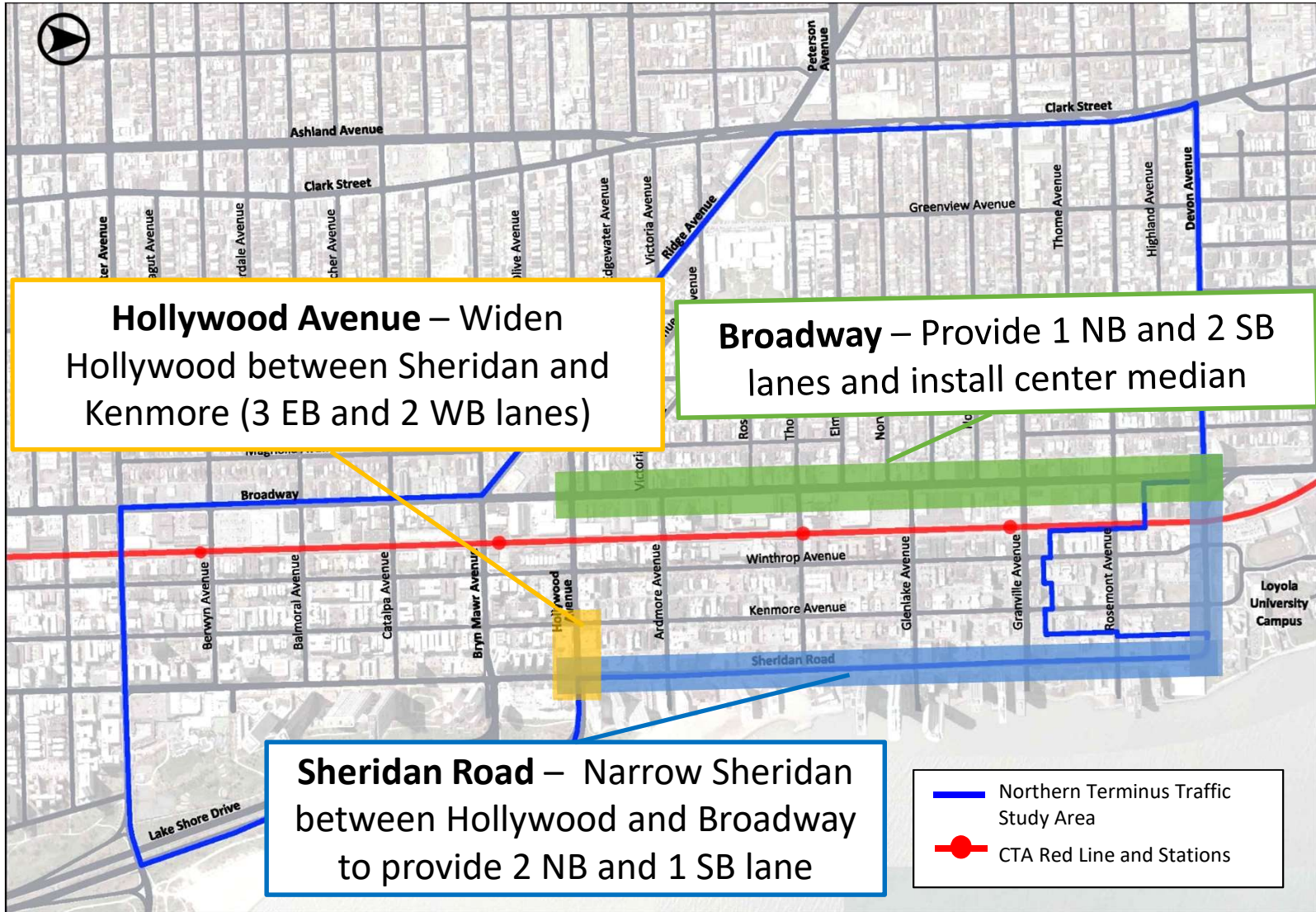
Sheridan/Hollywood Intersection – Automate manual traffic control operation during weekday morning peak period through use of in-pavement directional lighting, reversible lanes and overhead lane use controls on east leg



Alternative 2



Alternative 3



Alternative 4



Hollywood Avenue – Create two-level roadway facility between Ridge and NLSD

- Upper-level: three lanes (1 EB and 2 WB lanes separated by tunnel opening)
- Lower-level: four lanes (3 EB and 1 WB)

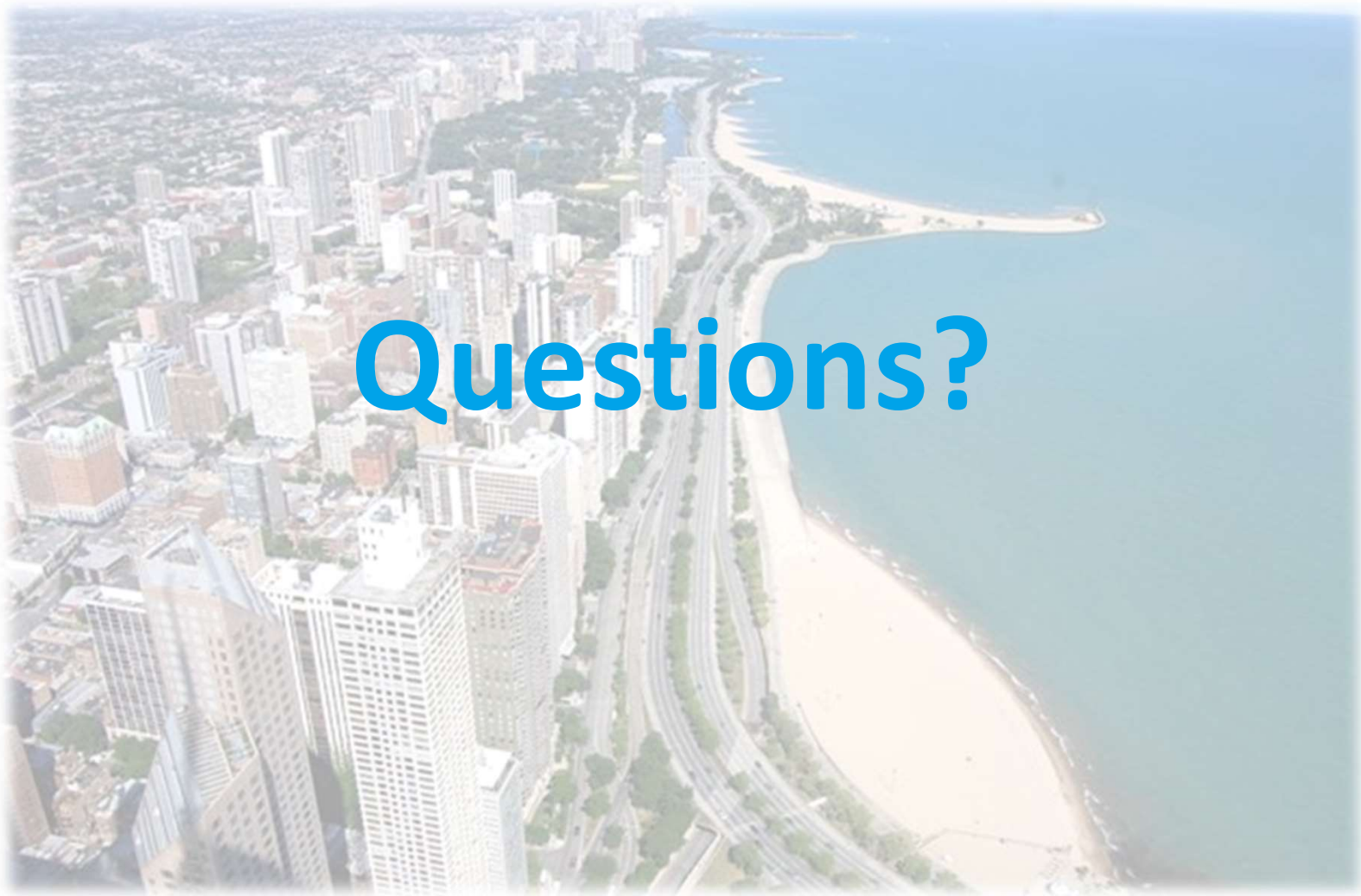
Broadway – Provide 2 NB and 2 SB lanes and install center median

Hollywood/Broadway & Hollywood/Ridge – Provide entrance and exit ramps to lower-level express lanes

Sheridan Road – Narrow Sheridan to three lanes between Hollywood and Broadway (1 NB, center turn lane, 1 SB)

- Northern Terminus Traffic Study Area
- CTA Red Line and Stations







NTTS Finalist Alternatives Workshop



NTTS Alternatives Workshop

Please join the table at the back of the room that matches the colored sticker on your nametag

- Each table will have the same information
- Facilitators will walk through key aspects of the alternatives
- Facilitators will record comments
- Fill out a comment form, or mail it by November 15, 2019
- Discussion will conclude at 9:00 p.m.

Next Steps

- Review your feedback and refine alternatives
- Complete alternatives review and present preferred alternative at final Community Meeting in winter 2019/2020

