

# STATION 2

# NDLSD STUDY PROCESS

NORTH DUSABLE LAKE SHORE DRIVE (NDLSD) PHASE I STUDY



# PROJECT LOCATION



- 11 Neighborhoods
- 6 Wards
- 7 Miles Roadway Reconstruction
- Lakefront Trail Improvements
- 22 Bridges & Tunnels
- 12 Junctions



Review the full Project Purpose and Need Statement on the project website

## NDLSD PURPOSE & NEED

### Project Purpose

*The purpose of the North DuSable Lake Shore Drive Phase I Study is to improve the NDLSD multimodal transportation corridor.*

### Project Needs

- » *Improve safety for all users*
- » *Improve mobility for all users*
- » *Address infrastructure deficiencies*
- » *Improve access and circulation*



## IMPORTANCE OF NORTH DUSABLE LAKE SHORE DRIVE

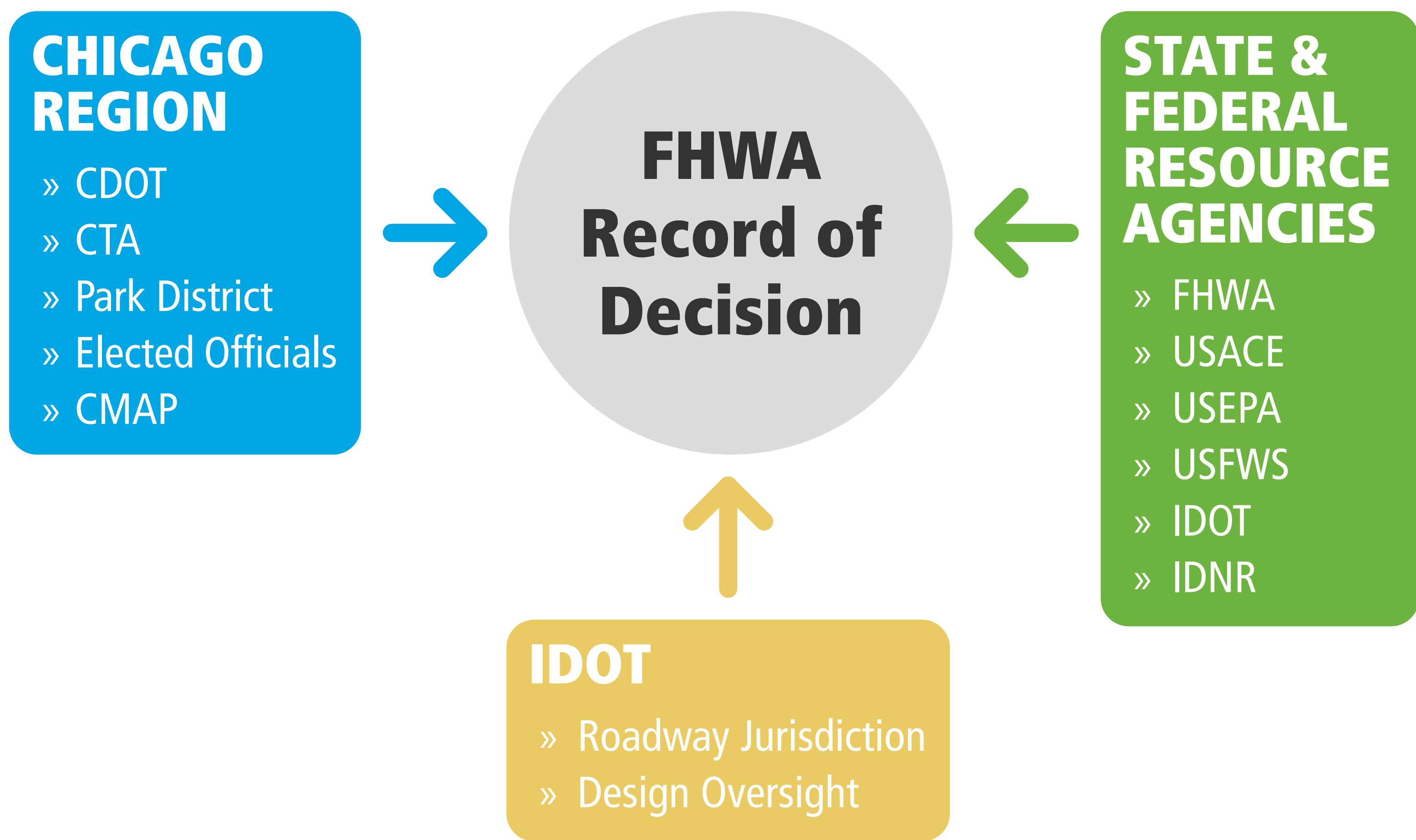
- » Major multimodal north-south corridor that provides regional connectivity for trips destined to and through the city center, carrying as many as 170,000 vehicles per day.
- » Within the NDLSD study area (extending approximately 2 miles to the west of the lakefront), 43% of all trips are made using transit. Nearly 30 bus and rail transit routes serve the study area, making it one of the most transit-rich corridors in the region.
- » The Outer Drive is on the National Highway System which consists of roadways that are important to the nation's economy, defense and mobility.
- » NDLSD is a "contributing feature" within historic Lincoln Park, tied closely to the expansion of the park and surrounding neighborhood development.



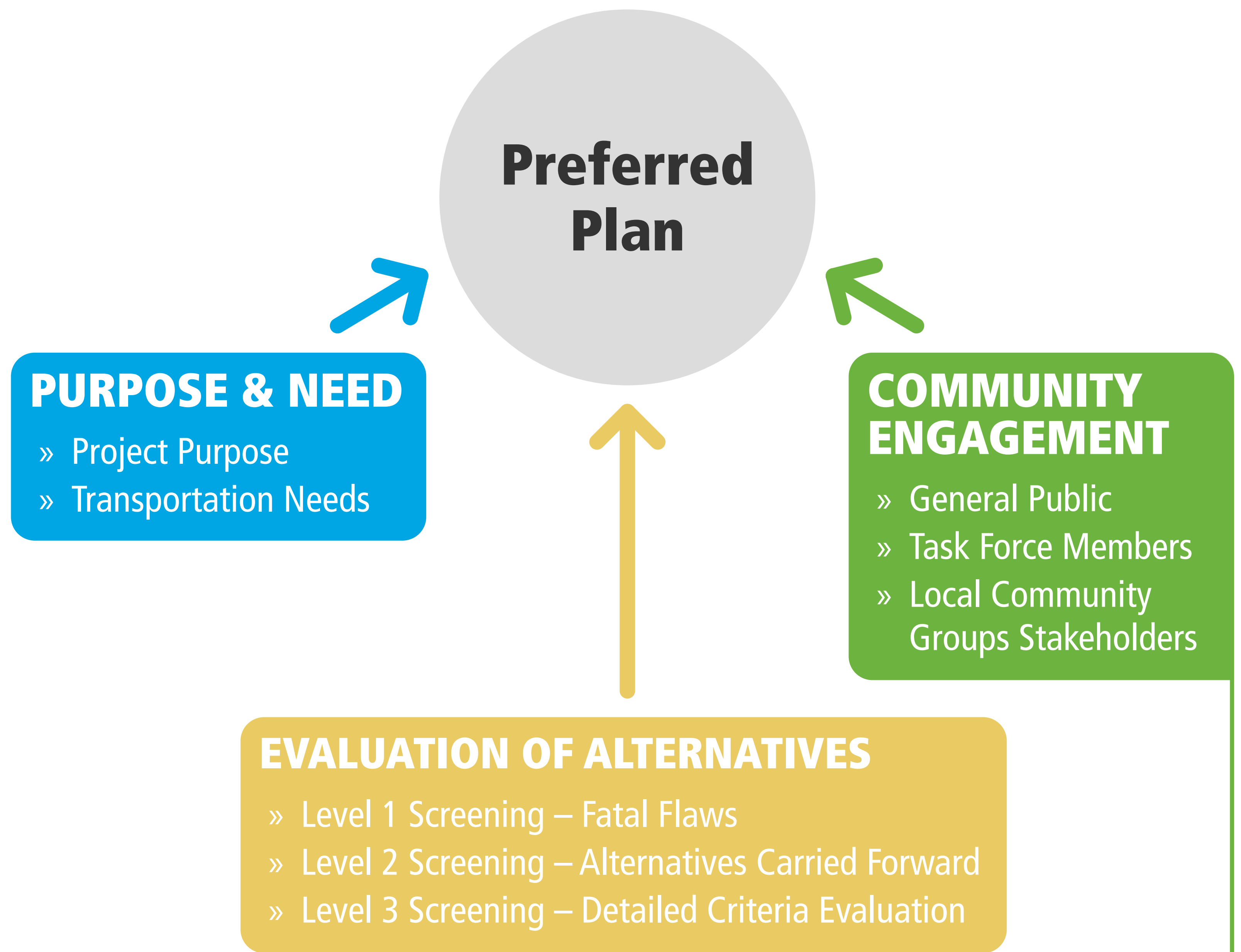
Congestion on NDLSD

***NDLSD is a critical regional facility for all users, providing access vital to the City's economy, while remaining an important part of Lincoln Park's history.***

## AGENCY DECISION-MAKING



## SELECTION OF PREFERRED PLAN



### Agency Acronyms

- FHWA: Federal Highway Administration
- USACE: United States Army Corps of Engineers
- USEPA: United States Environmental Protection Agency
- USFWS: United States Fish and Wildlife Service
- IDOT: Illinois Department of Transportation
- IDNR: Illinois Department of Natural Resources
- CMAP: Chicago Metropolitan Agency for Planning
- CDOT: Chicago Department of Transportation
- CTA: Chicago Transit Authority

- Engagement Opportunities**
- Project Website
  - Task Force Meetings
  - Community Meetings
  - Agency Coordination
  - Newsletters
  - Public Meetings
  - Public Hearing



# ALTERNATIVES DEVELOPMENT & EVALUATION

## Level 1 Screening

20+ Initial Alternatives  
*12 carried forward*

## Level 2 Screening

12 Alternatives  
*5 carried forward*

## Level 3 Screening

5 Finalist Alternatives  
*1 Preferred Alternative Identified*

## Preferred Alternative

Obtain Approvals  
Study Completion

### Alternatives Considered (Level 1) and Dismissed

- ~~X~~ Light Rail Transit
- ~~X~~ Tunnels and Causeways
- ~~X~~ 4 to 6 lane Local Street with Bus Lanes and Traffic Signals

**WE ARE HERE**

**DATA DRIVEN DECISION-MAKING**

## STUDY TIMELINE

- » Hold final Public Open House | **TODAY**
- » Hold Community-Focused Design Discussions with Community Members | 2024 - 2025
- » Hold Public Hearing | 2025
- » Complete Phase I Study to become eligible for federal funding | 2025
- » Secure funding and initiate Phase 2 detailed design | TBD

